

# YOUTH AND EXPERIENCE

Pitch Deck



## Youth and Experience

# Logline

A former child star is given a second chance at success when he is brought back as the host of the teen sketch show from which he was fired thirty years early, only to find that he'll be sharing the spotlight with his former co-star .. and his daughter.

# Format/Genre

1/2 hour, single cam comedy with a dash of drama.



# Synopsis

In the bustling world of live television, the iconic and campy children's show "Ollie's Treehouse" stands as a beacon of nostalgia, musical extravaganzas, and quirky skits, guided by the wisdom of Ollie, the animatronic owl.

Thirty years ago, Tammy Quintero and Sebastian Tate were the stars of the show. Their timing and witty banter were considered the gold standard for teen sketch comedy. That all changed when Sebastian was fired as a result of the "mysterious lift incident" while Tammy saw her career soar to new heights.

After a scandal rocks the show in 2023, Sebastian is given a second shot at stardom when, to his surprise, he is paired with Tammy to co-host the latest season of the show. But that shot comes with a price. His adopted daughter Shelby will achieve her dream of become a cast member of Ollie's Treehouse - but only if Sebastian says yes.

What would you do to earn a second chance at success?



**Everyone deserves a second chance.**



# Sebastian Tate

Sebastian Tate, a gifted dancer who is tone deaf, was once the shining star of the long-running and hugely-popular teenage sketch show, Ollie's Treehouse. At the age of fourteen, Sebastian was unceremoniously fired from the show after the mysterious "lift incident," prompting Sebastian to leave show business altogether.

Sebastian's still a prankster, though, and his eyes still twinkle with mischief. He produces his own prank channel on YouTube and is the owner of moderately successful dance studio in North Hollywood. Sebastian's always one wrong decision from renewed success; he's a dreamer who's never quite grown up. His true ray of sunshine is his adopted daughter, Shelby. Sebastian would do anything to give her the world and life she deserves.

**Age:** Mid 40s

**Born:** Nottinghamshire, England

**Lives in:** North Hollywood, CA

**Physical Description:** Thin with brown hair

**Archetype:** The unlucky everyman

**Interesting quirk:** Phenomenal dancer, yet tone deaf

**Life goal:** Redemption for the lift incident + another shot at show business

**SEBASTIAN 1993**



## Character Comedy:

"I may not be the 'it' person in Hollywood anymore, but at least I've upgraded to 'who was that again?'"



# Shelby Tate

Shelby is a vibrant, spirited fourteen-year-old with an infectious smile that's hard to miss. Growing up in the supportive and loving environment offered by her adoptive father, Shelby's become the confident, happy-go-lucky individual that she is today. She will try anything! No matter what she tries, she's good at it. Yet her fearless, risk-taking nature has been known to get her into harmless trouble at times.

From her attempts at navigating her new-found fame to her unwavering commitment to her friends and family, Shelby is focused on growing up, discovering oneself, following one's dreams, and living her best life.

**Age:** 14

**Born:** Unknown

**Lives in:** North Hollywood, CA

**Physical Description:** Long blond hair, often in a ponytail. About 5'5". Think Olivia Holt.

**Archetype:** The eternal optimist/the dreamer

**Interesting quirk:** Unable to lie

**Life goal:** To do the Disney Channel Wand ID



## Character Comedy

"So, I've decided to start a band with my friends. We're called 'The WiFi Seekers'. Our first album? 'No Connection!'"



# Tammy Quintero

Tammy became the nation's darling as the first Latinx teen star of the long-running and hugely-popular teenage sketch show, Ollie's Treehouse. Tammy left the show to pursue her dreams of superstardom, churning out a number of chart-topping hits as well as conquering Broadway, all before she was 21! Tammy stayed a household name as the charismatic host of her own talk show, where her warmth, humor, and charm made her America's sweetheart. Move over, Marie Osmond!

Despite her busy career, Tammy is a loving mother to her son, Liam, and she has been romantically linked with a few notable names. But she tends to keep her private life private, valuing her independence and personal space. Her role in the "lift incident" has never been confirmed.

**Age:** 44

**Born:** New York City

**Lives in:** Beverly Hills

**Physical Description:** 5'10" with long dark hair

**Archetype:** The cool one/the cool parent

**Interesting quirk:** Secretly writes TV show theme songs

**Life goal:** To "build her brand."

**TAMMY 1993**



## Character Comedy

"Goodness, I tried a new yoga position this morning: it's called the 'snooze button'... I highly recommend it for flexibility... in your morning schedule!"



# Liam Quintero

Liam is a lanky, fourteen-year-old with a blend of boyish charm and burgeoning sophistication; he's a young person on the verge of greatness. Liam's life has always revolved around his career. A classically trained pianist, singer, and actor, Liam's imdb profile is filled with dramatic performances and award-winning local roles.

Driven by his insatiable desire to "play Carnegie Hall," Liam is fiercely dedicated to his craft, just like his mother. His serious, ambitious nature hides the humorous, approachable kid desperate to break out. His life takes an unexpected turn when he scores a role on Ollie's Treehouse. Liam is overwhelmed by the world of television and his classical background clashes with the chaotic and improvisational nature of the show. He's still learning to navigate the complex dynamics of showbiz, new friendships, and his career, all while trying to stay true to himself.

**Age:** 14

**Born:** New York City

**Lives in:** Beverly Hills

**Physical Description:** Lanky with dark hair

**Archetype:** The overly-dramatic one/  
the child prodigy

**Interesting quirk:** Obsessed with perfection.

**Life goal:** To be an EGOT



## Character Comedy

"I'm currently accepting applause in the form of people not requesting 'Fur Elise' for the millionth time. Thank you for your cooperation."



# Ollie the Owl

Ollie the Owl is the heart and soul of the widely beloved and long-running teen TV sketch comedy show, "Ollie's Treehouse." Over the years, this animatronic owl has become an iconic figure, loved by generations for his wit, wisdom, and nurturing personality. Positioned on a perch in the treehouse that serves as the central hub of all the activities on the show, Ollie has watched over countless young stars as they navigate the ups and downs of adolescence.

Being the show's sage, Ollie is known for his profound insights and ageless wisdom. His advice often carries a touch of humor, making the learning process for the teens both enlightening and enjoyable.

He not only guides the teen stars but he also participates in various sketches, bringing a unique blend of wisdom and humor to the show. His treehouse serves as a haven, a place where the teens can gather to share their troubles, joys, and dreams. Through the series, Ollie helps them navigate the intricate web of relationships, school pressures, and the journey of finding oneself.



## Ollie's Advice

"When it comes to friendships, be like a good tree: always branching out, but never forget your roots!"



# Ollie's Crew



Kelly  
THE BIG SISTER

Vivacious, bubbly, and full of energy. But don't cross her.

Began her career in commercials.

Voracious reader.  
Does a vlog about her experiences on set.

## **Favorite Sketches**

Phone Home Quiz  
Fashion Forward with Fifi



Aria  
THE BAD GIRL

Exudes confidence and has a no-nonsense attitude.

Talented skateboarder.  
Wears a leather jacket.  
Passionate advocate for animal rights.

Plays the violin.

Grew up in Laguna Beach.

## **Favorite Sketches**

Treehouse Court  
Bark Bistro



# Ollie's Crew

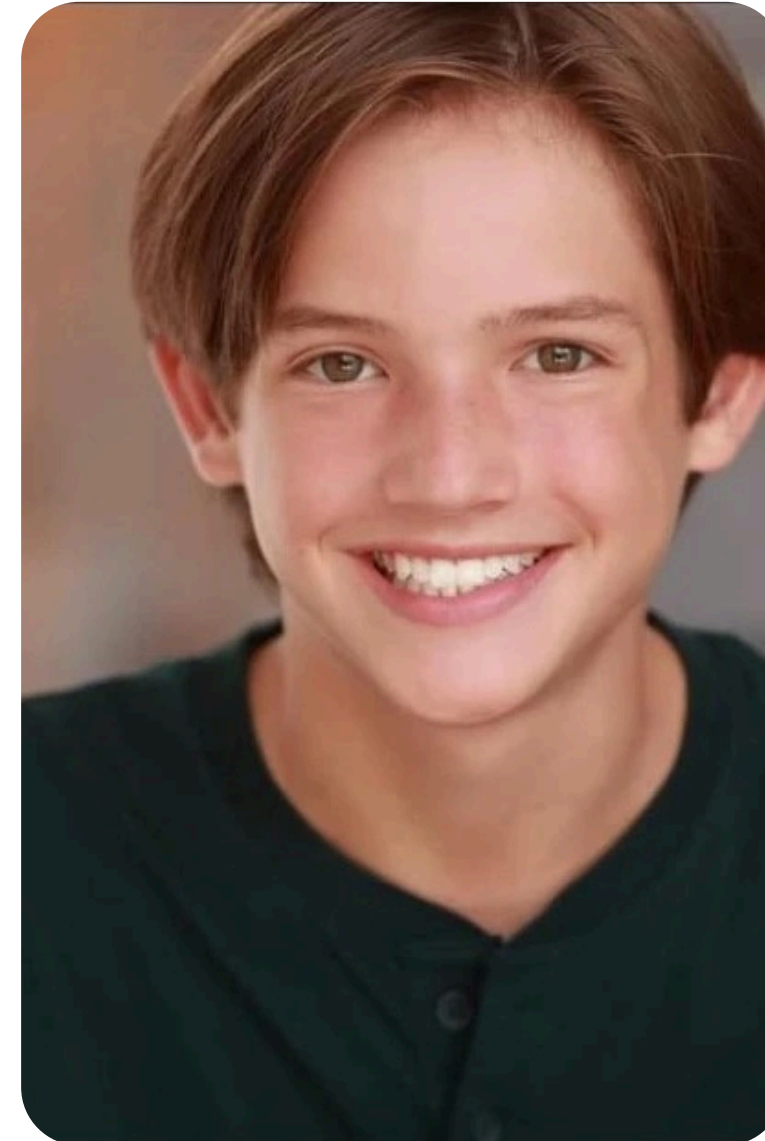


Josh  
THE HEARTHTHROB

Charismatic, not arrogant.  
An old soul.  
Great at improv.  
Wears vintage band tees  
and Converse sneakers.  
Grew up in Oregon.  
Aspires to be a director.  
Discovered by a talent  
scout in a local production  
of "Mame!"

## **Favorite Sketches**

Treehouse Idol  
Ollie's Oddball Olympics



Nate  
THE NAIVE ONE

Has a habit of taking things  
literally. Technology whiz.  
Loves his "Ollie Ears."  
Grew up in a secluded  
mountain town.  
Cast because of his  
bewilderment and pure-  
heartedness - and when he  
walked onto the set by  
accident.

## **Favorite Sketches**

Ollie's Mailbag  
Lost and Found Box



# The Network Execs



Jamal Robinson  
THE NEWBIE



Grace Huang  
THE VULTURE



World

## Ollie's Treehouse Set

The Ollie's Treehouse set is located inside a "large oak tree" on Stage 25. Ollie's is a place that has witnessed countless laughs, sketches, and performances, bearing the marks of time with pride and character. The set embodies a spirit of youthful resourcefulness, where the glue and tape are not just repair materials, but symbols of the ongoing life and vitality of Ollie's Treehouse.

Different levels within the treehouse serve as versatile stages for various sketches. Connected by rope ladders and wooden stairs, each platform offers a unique space for skits like Ollie's Mailbag and musical performances by Ollie's Crew.



Show Theme  
**A New Ray of Sunshine**

**Debut**  
September 1, 1984



World

# Tate House

Nestled within the San Fernando Valley, the Tate house radiates warmth from its well-tended garden to its lived-in interiors, adorned with family photographs and cherished mementos. It's a modest home filled with love.

Shelby's bedroom, for example, is a shrine to all that is good in the world.





World

# Quintero Mansion

In Beverly Hills, the Quintero mansion stands as a beacon of understated elegance. Every space within this dwelling stands as a testament to a relentless pursuit of excellence, embodying a lifestyle where dreams are forged into reality.

Liam's bedroom, for example, oozes drive and determination.





World

# Apex Studios

Apex Studios is a buzzing micro-city, showcasing a blend of old-world charm with modern technology. The studio streets are filled with movers, shakers, and aspiring actors.

**Youth and Experience** is filmed on Stage 25. The cast hangs out backstage, at the studio park, or at the commissary.

Ollie's Crew goes to school at the Apex Studio School, found on the lot right next to the famous Apex water tank.





# Tone

**Youth and Experience** maintains a heartwarming undercurrent that centers on family dynamics. The show explores the complexities, joys, and trials of familial bonds, bringing an emotional resonance that adds a rich layer to the comedy and chaos. This careful blend of old and new, of laughter and heartfelt moments, crafts a tone that is both nostalgic and fresh, a place where different generations come together in a delightful dance of the cherished past and the vibrant present, creating magic on the screen.

**Youth and Experience** is a vibrant combination of the youthful energy of "The Mickey Mouse Club", the behind-the-scenes showbiz flair of "Sonny with a Chance", and the skit-based humor of "All That".





# Themes

Everyone wants a chance at success. Everyone deserves a second chance. **Youth and Experience** explores the themes of opportunity and redemption through the lens of family.

In **Youth and Experience**, the spotlight shines on the challenge of carving out a unique identity. Especially when you're Shelby, trying to step out of the shadow of her dad, or Liam, aiming to be more than just "Tammy Quintero's son." This whirlwind of aspirations takes place in Ollie's Treehouse, a space where dreams and legacies intertwine. Shelby, Liam, and the rest of Ollie's Crew, are all jostling to make an impression. But let me tell you. Live TV is no joke. But the best part? Amidst the hustle, there's an unbreakable bond that ties them all. Because at the end of the day, nobody makes it solo. It's teamwork.

Sebastian and Tammy are just the experienced pros here; they're also navigating the joys and challenges of working alongside their kids. While they're dropping wisdom and sharing pro-tips, their dynamic with Shelby and Liam adds a whole layer of heart (and a dash of drama) to the mix. Ollie's Crew is one fire - bringing fresh vibes and shaking things up for the old guard. Between the family ties, the old-school vs new-school clashes, and everyone's personal quests, there's ever a dull moment.

As they navigate the highs and lows, the treehouse crew ends up sticking together through thick and thin



# Pilot: A New Ray of Sunshine

The popular teen TV sketch show, Ollie's Treehouse, is rocked by scandal when the adult host and its two top teen stars are caught spray painting graffiti on the outdoor sets of their competition, *Hype High*. The search goes out for two new teen stars.

Shelby Tate, gregarious fourteen year old, begs her dad, Sebastian Tate, to let her audition for the show. Shelby's always up to try something new.

While Sebastian wants to support his adopted daughter, he's reluctant to let her audition for the show from which he was fired some thirty years ago. In some ways, Ollie's Treehouse, because of the mysterious lift incident that has become part of the show's lore, scarred Sebastian for life. Shelby thinks being on the show would be a good way to finally repair her father's reputation.

Shelby auditions to be a member of Ollie's Crew, the teen troop that sings, dances, and acts on Ollie's Treehouse. She dances to an updated version of Up The Ladder to the Roof and impresses the panel of judges. Network exec Jamal Robinson knows Shelby's pedigree and offers Sebastian the deal of a lifetime and a deal with the devil. Come back to host Ollie's Treehouse and Shelby's the newest member of Ollie's Crew. Sebastian finally accepts the ultimate second chance, one he's been hoping for since the day he was fired.





# Pilot: A New Ray of Sunshine

America's sweetheart, Tammy Quintero, sees an opportunity to build her brand amongst the teen demographic. She's contacted by network exec Grace Huang, who wants Tammy back on the show as host. Tammy has one caveat. Seeing this as an opportunity to help her EGOT-driven son, Liam, build his brand, Tammy requests that Liam audition to be a member of Ollie's Crew.

Liam almost blows his audition over his obsession over the "perfect performance," Tammy strikes a secret deal; she will sign on as host if Liam is cast on the show as well. Tammy's back on the show after thirty years!

Meanwhile, the veteran cast members of Ollie's Crew, Aria, Nate, Kelly, and Josh, turn to Ollie for advice. Due to a glitch in a recent software update, Ollie spits out some very bad advice to the Crew: accusing competing show Hype High of sabotaging Ollie's Treehouse. The Crew is caught airing an AI-created video on TMZ.





# Season 1

The first season of **Youth and Experience** sees Sebastian and Tammy, Shelby and Liam, and the veterans of Ollie's Crew trying to gel as the new cast of Ollie's Treehouse.

**Creative Direction.** The ongoing tension between maintaining the show's traditional, nostalgic elements and pushing for modern, innovative changes pits Sebastian, who cherishes the original style of the show, against Tammy, who is constantly trying to modernize and innovate.

**Parent-Child Dynamics.** Shelby and Liam both want to emerge from their parent's shadows and be recognized for their own talents while Sebastian and Tammy grapple with being both parents and co-stars to their children. This leads to complicated family dynamics both on and off set.

**Cast Dynamics.** Differences in personality, work ethic, and vision among Ollie's Crew and the older generation lead to regular disagreements about how to best put on the show.

**Sebastian's Past.** As more details about the "lift incident" and Sebastian's past are revealed, it creates waves in his relationships with Shelby and Tammy. When the shocking truth about the "lift incident" is revealed at the end of Season 1, the truth about how Shelby and Liam were cast comes tumbling out as well.





# Season 1

The first season of **Youth and Experience** sees Sebastian and Tammy, Shelby and Liam, and the veterans of Ollie's Crew trying to gel as the new cast of Ollie's Treehouse.

**Creative Direction.** The ongoing tension between maintaining the show's traditional, nostalgic elements and pushing for modern, innovative changes pits Sebastian, who cherishes the original style of the show, against Tammy, who is constantly trying to modernize and innovate.

**Parent-Child Dynamics.** Shelby and Liam both want to emerge from their parent's shadows and be recognized for their own talents while Sebastian and Tammy grapple with being both parents and co-stars to their children. This leads to complicated family dynamics both on and off set.

**Cast Dynamics.** Differences in personality, work ethic, and vision among Ollie's Crew and the older generation lead to regular disagreements about how to best put on the show.

**Sebastian's Past.** As more details about the "lift incident" and Sebastian's past are revealed, it creates waves in his relationships with Shelby and Tammy. When the shocking truth about the "lift incident" is revealed at the end of Season 1, the truth about how Shelby and Liam were cast comes tumbling out as well.





# Season 2

## Ollie's Treehouse 40th Anniversary

The seeds of distrust sown at the end of Season 1 must be put aside as Season 2 celebrates the buildup to Ollie's 40th Anniversary Show! Shelby and Liam begin to come into their own, finding their footing as the emerging stars of the show. Their witty banter is just like their parents. Their friendship blossoms, and they start become more influential, bringing modern elements to the traditionally campy show.

As they spend more time together on set, Tammy and Sebastian's relationship slowly evolves. From initial hesitations and unresolved tensions, they gradually move towards a deeper understanding and perhaps a budding romance, navigating old feelings and new dynamics. The pressure is on for Ollie's Treehouse.

Even with all the hype surround the anniversary, Ollie's ratings are middling and renewal hinges on the 40th Anniversary show. Will Ollie make it to Season 41?





# Season 3

## Ollie's Renaissance

Ollie survives the cancellation threat! With Shelby and Liam's fresh influence and the resolution of past conflicts, the show undergoes a renaissance. A blend of the old charm and new innovations transforms "Ollie's Treehouse" into a sensation, gaining a resurgence in popularity and critical acclaim, symbolizing a new beginning for the show.

Ollie's ratings success makes the show the target of *Hype High*. The competing show continues to be a thorn in Ollie's side, trying to undermine Ollie at every turn.

As new relationships blossom, complex love triangles begin to form, involving not just Tammy and Sebastian, but also Shelby, Liam, and the members of Ollie's Crew. The personal lives of the characters become a focal point, adding layers of romance, conflict, and drama to the storyline.





## A Non-Musical Person, That's Me!

When I was growing up in the 1970s, my dream was to be on *The Mickey Mouse Club*. Turns out I didn't have the requisite skills to yell out "Why? Because we like you!"

Bash and I have been best friends since elementary school. Bash is a phenomenal dancer. He's one of the bounciest, peppiest people I've ever met. Bash moved to England before middle school and appeared in a local song and dance troupe - *even though he can't sing!* His lip-syncing ability is legendary.

My life, though, has been scarred by lack of musical talent. When I was in junior high, I was kicked out of band when (a) I struggled to master the basics of the clarinet and (b) my clarinet broke in the middle of a concert. In high school, I thought I'd be brave and join chorus. Turns out I'm tone deaf, just like Bash. My ultimate humiliation, though, came as a teacher during a school mass when we were all encouraged to "sing out loud." I tried my best; a colleague turned around and said, "You stink!" I've never sung in public (or private) since. Maybe I should have asked Bash for lip sync lessons.

Bash told me about a kid who was fired from a *Mickey Mouse Club* type show back in the 80's for an "elevator prank." The story reminded of times in my life when I wish that I had been given a second chance. Heck, when it comes to any sort of musical talent, I wished I'd been given a first chance!

**Youth and Experience** seeks to answer this question: What if you were given a second chance at success? Maybe I should have just settled for doing the Disney Channel Wand ID thing!

# Contact

Eric A. Walters  
ericw808@gmail.com  
718.909.9991

